

Solomon Practice Paper

Pure Mathematics 2G

Time allowed: 90 minutes

Centre: www.CasperYC.club

Name:

Teacher:

Question	Points	Score
1	5	
2	7	
3	8	
4	8	
5	8	
6	10	
7	13	
8	16	
Total:	75	

How I can achieve better:

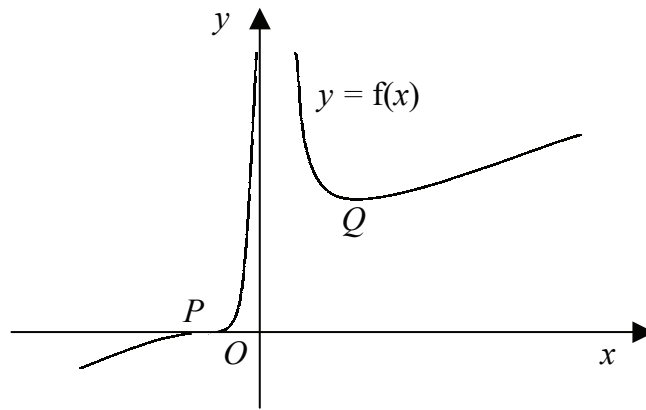
-
-
-



Last updated: December 24, 2025



8. Figure shows the curve $y = f(x)$ where $f(x) \equiv \frac{(2+x)^3}{x^2}$.



(a) Express $(2+x)^3$ as a series in ascending powers of x . [2]

(b) Hence, express $f(x)$ in the form $Ax^{-2} + Bx^{-1} + C + Dx$. [2]

The curve intersects the x -axis at the point P .

(c) Find the coordinates of P . [2]

(d) Show that $f(x)$ is stationary at P . [4]

(e) Hence, find the coordinates of the other stationary point on the curve, Q . [6]

Total: 16

